

GREEN LEAF DESMODIUM

Desmodium intortum

Viny, climbing, non-bloating legume. Green Leaf Desmodium is adapted to Australia's high rainfall costal areas.

BENEFITS

- Tolerates shaded areas
- High protein content

LIMITATIONS

- Slow to establish (low seedling vigour)
- Requires careful management



+900mm



Sandy Loam/
Clay Loam



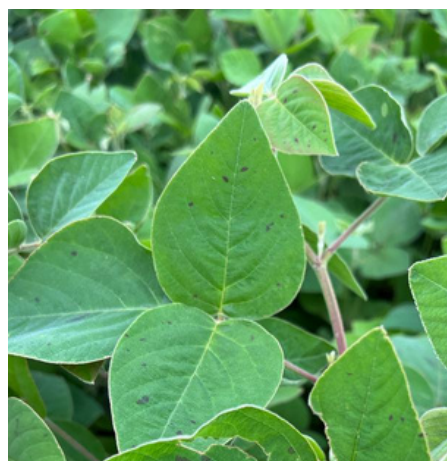
5.0+



Mix: 2kg/ha

PLANTING

- Typically planted between October and January when reliable rainfalls are forecast
- Dry spells should be avoided
- Usually sown in a mixed pasture, Green Leaf Desmodium should be inoculated with CB627 inoculant



ESTABLISHMENT

Once established, Green leaf desmodium should be rotationally grazed to reduce selective grazing. The growing points of the legume should not be grazed to encourage recovery after grazing.

Good growth in autumn and spring.

USES suited to the following livestock



Companion Species - Tropical grasses (Rhodes, Panic, Signal, Digit). Tropical legumes (Desmanthus, Stylos, Centros, Leucaena)